



Middle Down, Aldenham, WD25 8BW

£3,500 PCM

Offered for rent is this extended and well presented four/five bedroom courtyard house situated in the popular Wall Hall development in Aldenham. The property offers three bedrooms to the first floor together with two bathrooms (one en-suite) and to the second floor there is a further bedroom, bathroom and fifth bedroom or study.

The ground floor accommodation comprises of a large extended reception room, kitchen/breakfast room and guest cloakroom.

The property also has underfloor heating throughout, a well maintained garden and parking for three cars.

In addition, the property has access to the surrounding estate grounds together with a gym and tennis court. The property is available October 2025 on an unfurnished basis.

- Prestigious Wall Hall Development
- 4/5 Bedrooms
- Access to Gym & Tennis Courts
- Close to Radlett & Motorway Network
- Allocated Parking
- Available Immediately



VIEWING

Strictly by appointment with Susmans Estates

Tel: 01923 859444

**299 Watling Street
Radlett
WD7 7LA**

E-mail:

office@susmansestates.com

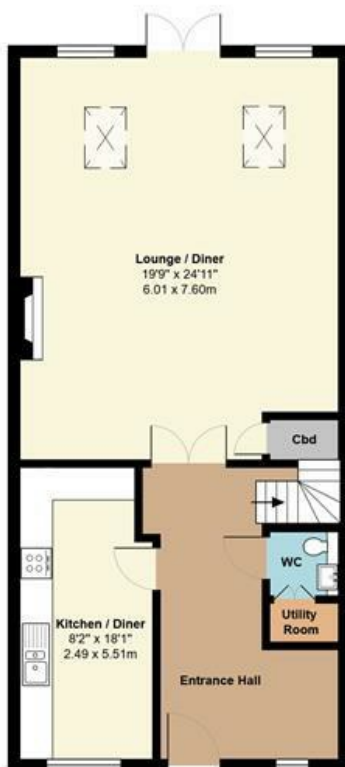
Website:

susmansestates.com

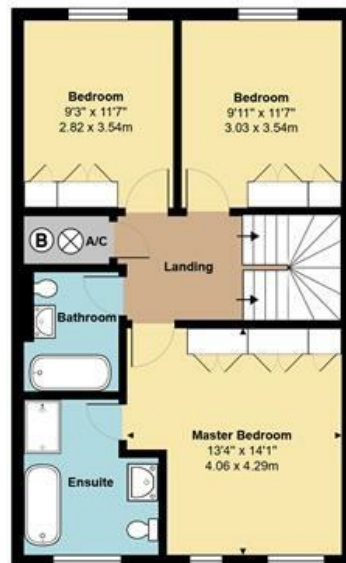
Ref: 2554



Second Floor
Area: 466 ft² ... 43.3 m²



Ground Floor
Area: 858 ft² ... 79.7 m²



First Floor
Area: 654 ft² ... 60.8 m²



Total Area: 1979 ft² ... 183.8 m²
All measurements are approximate and for display purposes only.

SUSMANS
ESTATES

